



Follow us

**Seeking a vaccine**  
against breast cancer

**AGAINST<sup>®</sup>**  
breast cancer

# Contents

<b>Page 3</b>	<a href="#"><u>Who we are</u></a>
<b>Page 4</b>	<a href="#"><u>Why we must beat breast cancer in the UK</u></a>
<b>Page 5</b>	<a href="#"><u>What work do we fund and where?</u></a>
<b>Page 7</b>	<a href="#"><u>Our core research programmes</u></a>
<b>Page 8</b>	<a href="#"><u>Our research themes</u></a>
<b>Page 9</b>	<a href="#"><u>An inspiring partnership created for you</u></a>
<b>Page 10</b>	<a href="#"><u>Just some of our campaigns</u></a>
<b>Page 11</b>	<a href="#"><u>Supporting us</u></a>
<b>Page 12</b>	<a href="#"><u>Supporting us as a company</u></a>
<b>Page 13</b>	<a href="#"><u>Our supporters stories</u></a>

This is an interactive document.  
Click on the top nav and contents  
to navigate the document. The  
button icon opposite will take  
you to related weblinks.





# It all started nearly 30 years ago...

The charity was started by Dr Anthony Leathem, a former pathologist and his wife Patricia who worked as a breast cancer theatre nurse.

They were upset by how many women they saw who passed away from breast cancer. Responding to an urgent need to improve breast cancer survival, they decided to take matters into their own hands and personally fundraised for Anthony's research into beating breast cancer.

**Against Breast Cancer was founded in 1993.**

**A research  
charity  
born by  
researchers**



## We fund research in 3 areas:



**Prevention**

How diet and lifestyle may alter the risk of secondary breast cancer developing.



**Detection**

Designing better tools for earlier diagnosis of secondary breast cancer to increase survival rates.



**Therapies**

How the body's natural defenses could be harnessed to create more effective treatments.

# Why we must beat Breast Cancer in the UK

Breast cancer is the **most common form** of cancer in the UK.

Every year around **55,200** new breast cancer cases are diagnosed.

Around **400 men** are diagnosed with breast cancer every year.\*

**Secondary spread** is the main cause of breast cancer-related deaths.

It claims the lives of around **11,400 people every year.**

Only **1 in 4** diagnosed with secondary breast cancer **survive for 5 or more years.**

There is currently **no cure.**

**AGAINST**<sup>®</sup>  
breast cancer

The goal of **Against Breast Cancer** is to stop secondary spread breast cancer from claiming lives.

\*All values approximate based on average data 2015-2017 from [www.cancerresearchuk.org](http://www.cancerresearchuk.org)

# What work do we fund and where?

PhD  
Funding

Projects

Fellowship  
Schemes

Core  
Funding

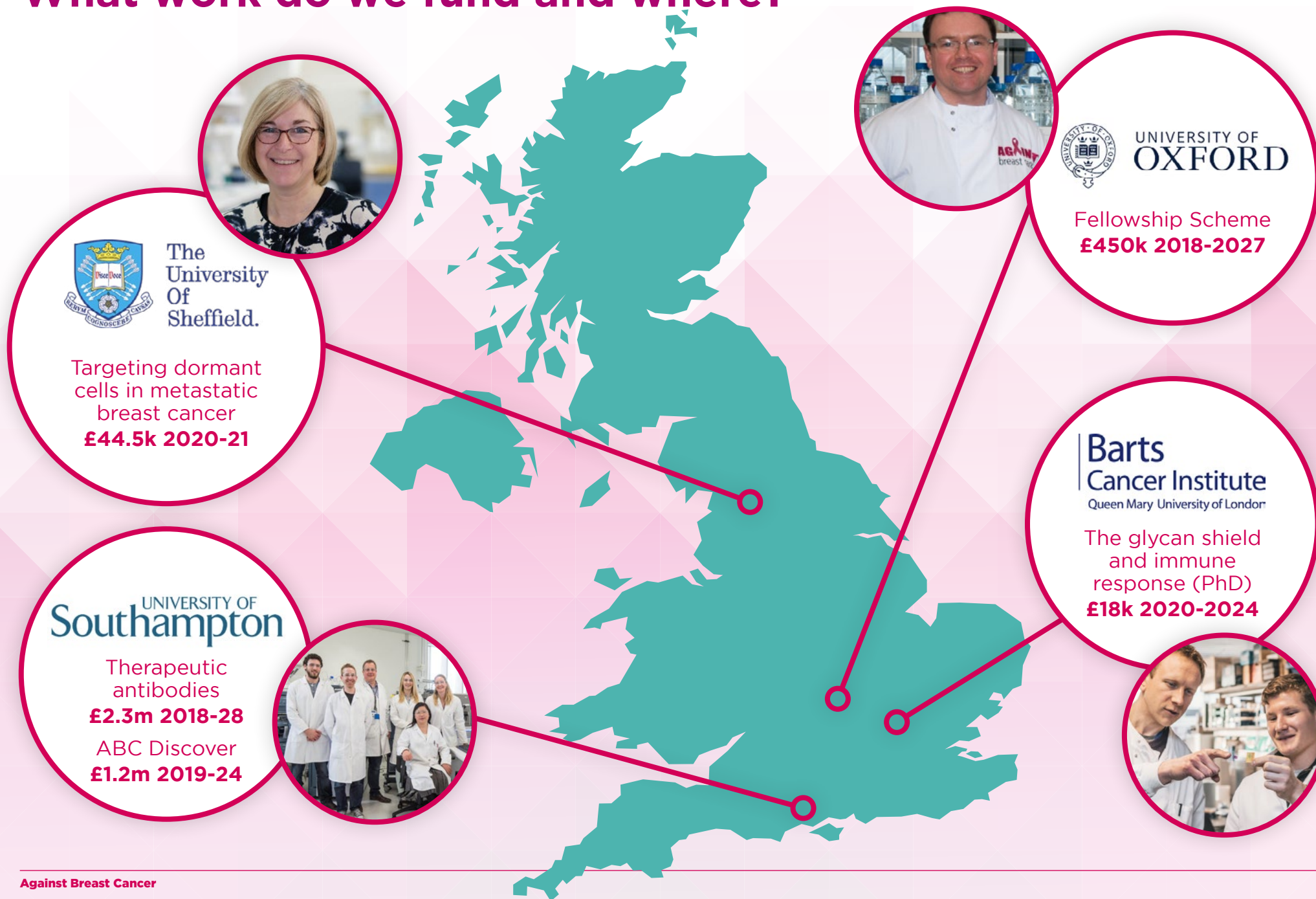
We support graduate students and researchers in the early stages of their careers looking to a bright future of ground breaking research

We fund research projects that seek to beat breast cancer

Fellowship schemes support young scientists to continue vital research innovation

Our commitment to a specific 10 year research programme at Southampton University

# What work do we fund and where?





# Our Core Research Programmes: ABC Southampton Programme

## Leadership team:

Prof. Max Crispin,  
Prof. Steven Beers,  
Prof. Paul Skipp &  
Dr. Charlie Birts

UNIVERSITY OF  
**Southampton**

### Biobank

DietCompLyf  
ABC Discover

The ABC Discover project will use our DietCompLyf Biobank of blood and urine samples from over 3000 women with breast cancer to:

- Understand why some cancers become metastatic,
- Identify risk biomarkers for recurrence and metastasis,
- Revolutionise better treatments

### Detection

Biomarkers

Our research focus into Detection aims to identify markers of metastatic disease to aid earlier diagnosis and improve patient survival.



### Therapy

Immunotherapies  
Vaccine

Our research focus into Therapies includes a 10 year Therapeutic Antibody project to develop better immunotherapy treatments and a vaccine against metastatic breast cancer.

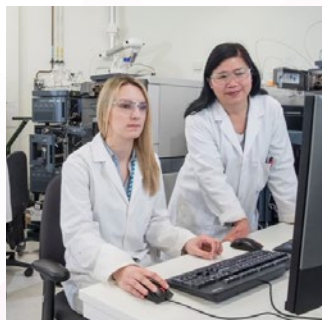
### Prevention

Diet and Lifestyle  
Vaccines

Our research focus into Prevention aims to provide evidence-based advice on diet and lifestyle factors that may reduce risk of recurrence by analysing the diet/lifestyle questionnaire data attached to our Biobank.

# Our research themes

We fund research into **3 – important areas** that you can help us to fund.



**Prevention**

Diet and Lifestyle Biobank

**Find out about  
this project  
and more**



**Detection**

Biomarkers – ABC Discover

**Find out about  
this project  
and more**



**Therapies**

Antibody Engineering Technology

**Find out about  
this project  
and more**



# An Inspiring Partnership created for you

We receive no government funding so our work is entirely the result of supporters and corporate partners like yourselves. Here are some of the things we offer corporate partners, without whom we could not carry out our world-class research.

**Your  
Personal  
Account  
Manager**

**Events &  
Campaigns**

**Recycling**

**Payroll  
Giving**

**Corporate  
Volunteering**

**Cause related  
marketing and  
gift in kind**

**Virtual  
Fundraising**

**Charity of  
the year**

# Just some of our campaigns...



# Supporting us

## Fundraising



- We have lots of **Corporate Fundraising** opportunities. Whether it's a bake sale, a bingo or quiz night or a larger fundraising event.
- We have great fundraising campaigns such as *Breast Tea Ever*, *Turn Your League Pink* and *Splash of Pink*.
- Get fantastic charity branded materials and merchandise from our charity shop but first get a FREE Fundraising Pack.



## Events

- Get places on our sports events or challenges and take part as a team with colleagues for a great team building experience.
- Some of the events we have places for include: *Berlin Marathon*, *Great North Run*, *The Inca Trail Trek*, *Oxford Half Marathon* and more.
- We can help to find a challenge to suit your companies people, or design a challenge with you.
- Take part in or sponsor our flagship event series *The Breast Walk Ever*.





# Support us as a company

## Volunteering days

We could not run the charity without volunteers at events or supporting us to do work to raise money to beat breast cancer.

## Gift in kind and products

Do you have essential goods or services you could gift to the charity saving us money? Do you have a product or service you want to use to help fight secondary spread breast cancer?

## Payroll Giving

Payroll Giving Payroll giving is the way to donate to charities without paying tax on it. We can help you to set up payroll giving with Against Breast Cancer.

## Corporate grants and matched giving

Does your company have a grant scheme to support charitable organisations? Perhaps your employees fundraising can be supported by matched giving from the company to help show your support for their work even more.



Get a bra bank.  
Donate clothes  
and goods.  
Donate old ink  
cartridges.



Shop for us!  
Use eBay, Amazon  
Smile, Savoo and  
many more sites to  
raise funds for us!



## Our supporters stories

### Tina's Story



### Paul's Story



### Laura's Story



...for a future free of Breast Cancer...



Please consider  
us as your next  
'Charity of The  
Year' Partner

*Thank you*

Follow us

[againstbreastcancer.org.uk](http://againstbreastcancer.org.uk)